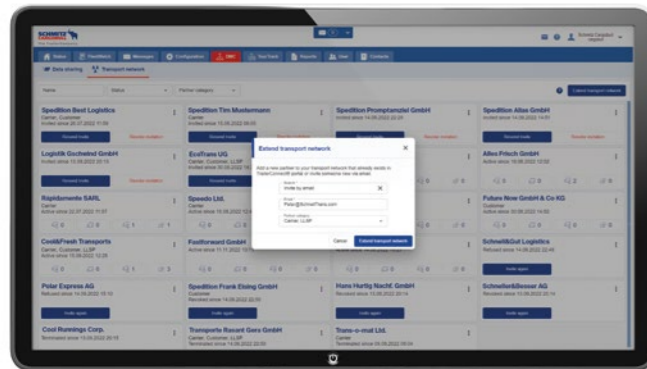


TrailerConnect® Portal

Intelligent platform for data integration, live tracking & trailer service

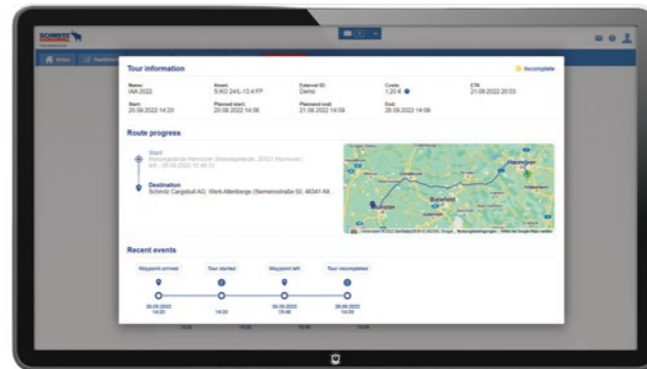
After logging in, you can see and manage your fleet's transport data at a glance and have access to additional functions. You configure data exchange with third parties in the TrailerConnect® Data Management Center and start and manage route planning in TrailerConnect® TourTrack. If required, you can also monitor the status of your trailer fleet, compliance with the cold chain for temperature-controlled transports and transports according to specific safety standards in the portal.



TrailerConnect® Data Management Center

Central integration of different systems

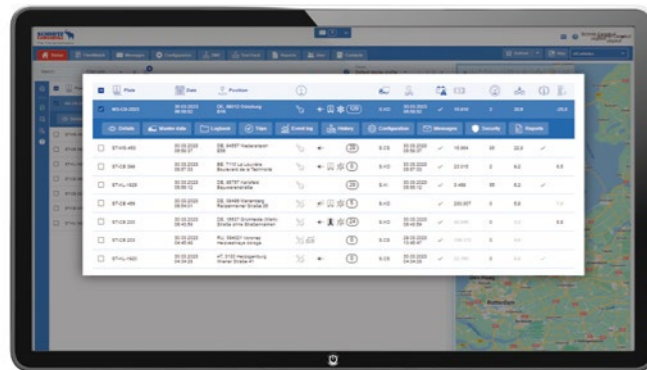
- Infrastructure and consolidation platform for all telematics systems and data
- Individual and secure configuration of data streams
- Visualisation of the entire transport network - incl. subcontractors



TrailerConnect® TourTrack

Order-related tracking of vehicles and sharing of transport data

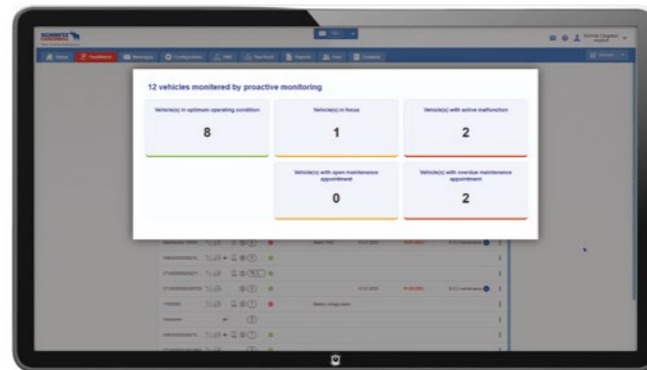
- Targeted and selected data forwarding for each route, e.g. to any real-time visibility platform (RTV)
- Route-based real-time monitoring, including estimated time of arrival (ETA)
- Automatic generation of order-related temperature reports



TrailerConnect® FleetTrack

Real-time fleet visualisation

- Display of truck & trailer position and availability in real time - independent of the telematics hardware used.
- Comprehensive notification and alarm configuration
- Personal reporting and history of all events, positions and temperatures



TrailerConnect® FleetWatch

Real-time monitoring of the cooling unit

- Fleet dashboard for real-time monitoring of transport cooling units
- Automatic fault analysis with recommendations for remedial action
- Service partner - mediation in the event of a breakdown



More information about TrailerConnect® Data Management and TrailerConnect® TourTrack

SCHMITZ
CARGOBULL

The Trailer Company.



TrailerConnect® Data Management Center & TrailerConnect® TourTrack

Sharing data, but securely.

Keep control of your transport data and share it securely with your customers:

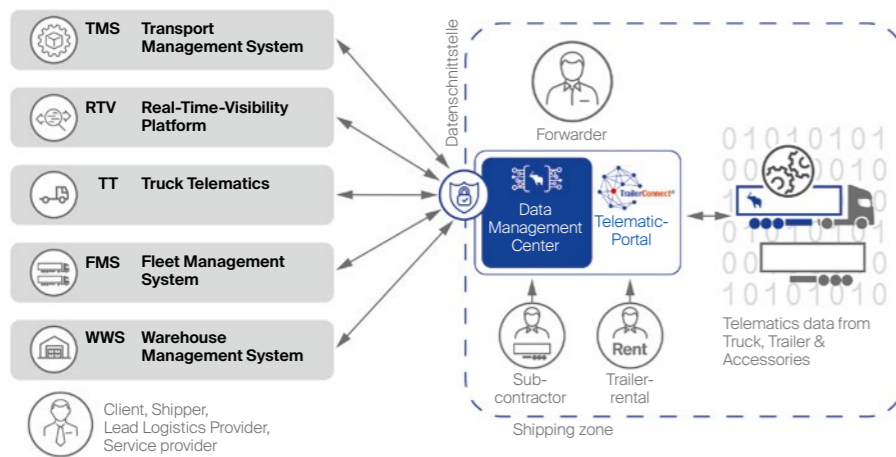
- **Numerous interfaces:** Connection to all relevant telematics systems, real-time visibility platforms (RTV), transport management systems, fleet management systems and other transport logistics information systems.
- **Integration and protection of your transport network:** Automatic onboarding of subcontractors and controlled forwarding and monitoring of transport orders.
- **Filter function:** Your own forwarding network is anonymised and only selected and order-related data is passed on to third parties.
- **Route-based transmission:** Transport data is transmitted route-based and, if desired, automatically.
- **Real-time tour monitoring** including estimated time of arrival (ETA) and validated temperature recording.
- **Easy tour setup** for transport unit, route, data, geofences, additional functions.



TrailerConnect® Data Management Center

Connect participants in the process and share data securely

Making transport data available in real time on different platforms is the prerequisite for a transparent supply chain. In the TrailerConnect® Data Management Center, you manage your transport data in one central location. If required, you can exchange the data selectively and in a controlled manner with third-party systems such as telematics web portals, transport management systems (TMS) or real-time visibility platforms (RTV). With the TrailerConnect® Data Management Center, you can quickly set up a network with subcontractors, clients and third-party systems for your transportation company without any IT knowledge. Telematics data (also from other providers) is integrated, transport data is consolidated and a central platform is created for all information relating to your fleet and the transport of goods. You retain full control over your transport data and decide who can see what and when.



You have full control

- Selectively connect to your clients' real-time visibility (RTV) platforms and other external systems and choose which data to share
- Connection to all relevant platforms - immediately available without IT implementation



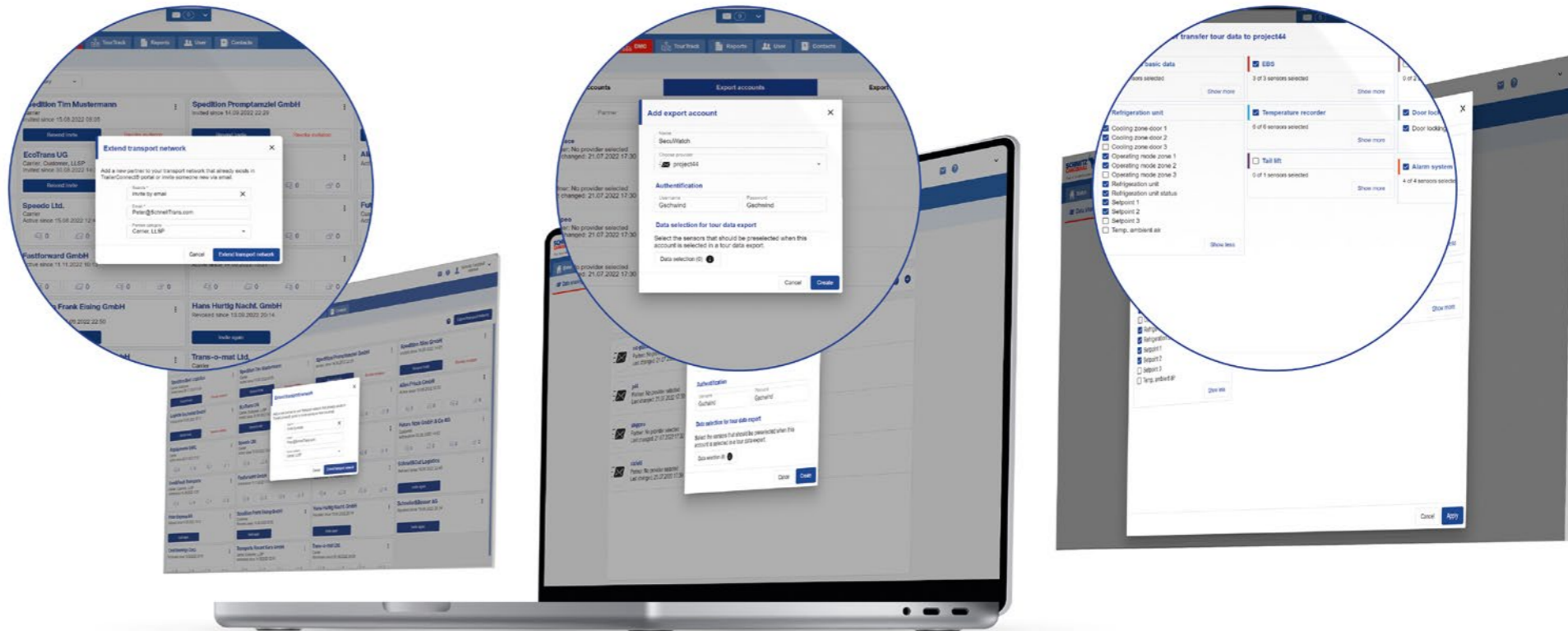
Invite your partners

- Select partners and subcontractors from existing list or invite new contacts
- Your transport network is anonymised for third parties
- Data connections are configured automatically



Controlled data sharing with your clients

- Freely configurable selection of data to be transmitted
- Selection can be adapted to the order at any time



TrailerConnect® TourTrack

Create and monitor tours quickly and easily

With TrailerConnect® TourTrack, routes can be created quickly and easily or imported from transport management systems. You get an immediate and detailed overview of the status of your dispatches and routes and can track them. Unplanned deviations become immediately visible. This enables efficient "management by exception" and reduces calls from the dispatcher to the driver.



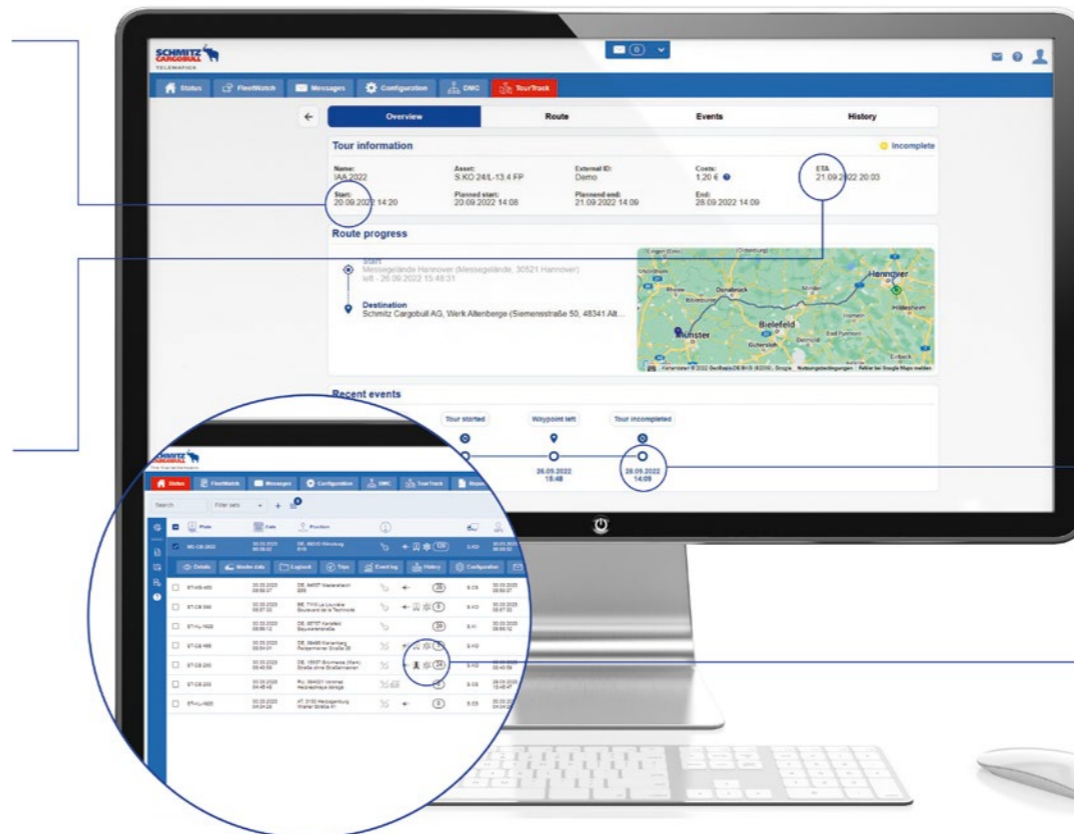
Ready to go with just a few clicks

- Easy to use user interface for simple route planning
- Select route set or create new route
- Enter dates, times, start and destination points
- Select transport unit
- Set alarms, settings and setpoints
- Set up geofence zones



Status overview

- All important and current trailer data at a glance
- Route monitoring in real time incl. estimated time of arrival (ETA)
- Use of vehicle groups and filter sets for needs-based views



TourTrack Management

- Evaluation of individual routes in a clear dashboard (event, temperature and position history)
- Easy transfer of data through export function
- Controlled data exchange for each route individually selectable



Cold chain management

- Automatically generate order-related temperature reports
- Legally compliant documentation as proof of compliance with the cold chain
- Graphic display of the route with current position
- History of events

