

Cooling expertise

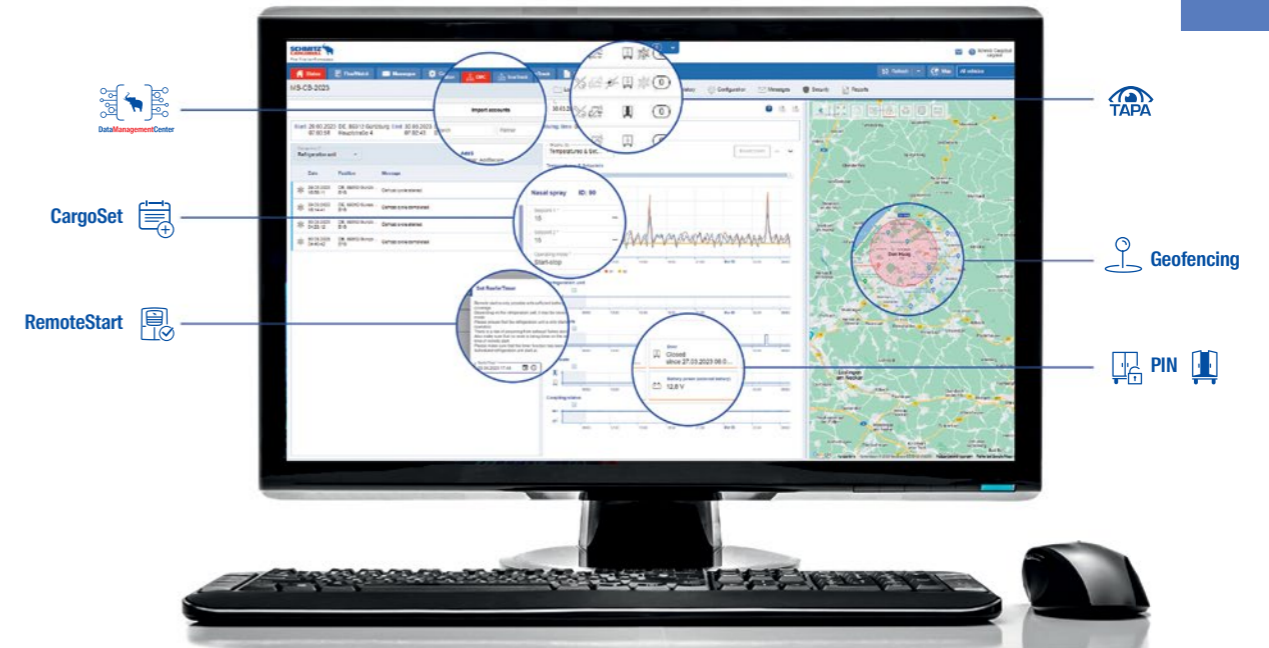
The components of the FERROPLAST® body, the S.CU cooling unit and the TrailerConnect® telematics system, which are optimally matched to each other in the S.KO COOL semitrailer box, ensure efficient and reliable cooling in temperature-controlled transport. The vapour diffusion-tight FERROPLAST® body with efficient insulation and the optimised air distribution system ensure a uniform and reliable temperature control in the interior

The S.KO COOL vehicles can be equipped ex works with safety functions that meet the highest safety standards according to TAPA* TSRI. In TAPA* mode, the PIN-secured door locking system, Body Protect alarm system and acoustic alarm are monitored and controlled with TrailerConnect® telematics.

The standard TrailerConnect® telematics monitors the trailer in real time. All transport data can be accessed via the **TrailerConnect® portal** or mobile apps such as the **beUptoDate app** and **beSmart app**. Over-the-air updates always keep the cooling unit up to date. Supplemented with comprehensive full service, you plan maintenance work in advance and know about possible failures before they happen

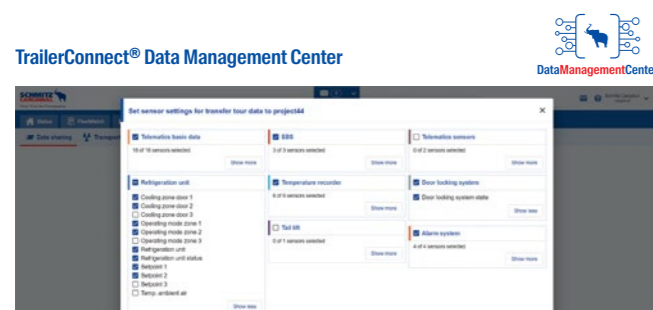
The Europe-wide service partner network with 24/365 breakdown service ensures maximum trailer uptime. The Full Service & Protection contract also includes handling in the event of repairs. All-risk cover protects the driver against the risks of everyday work.

* TAPA = Transported Asset Protection Association



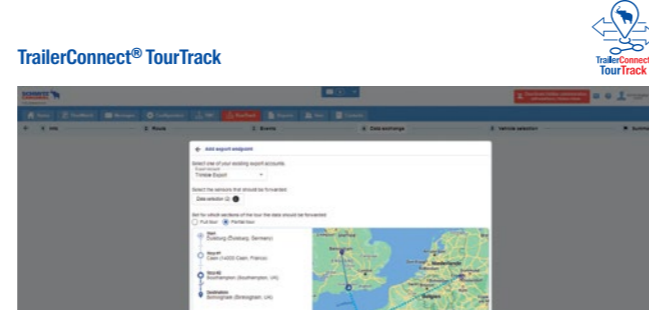
TrailerConnect®. One portal. Numerous functions.

Intelligent services for data integration, live tracking & trailer service.



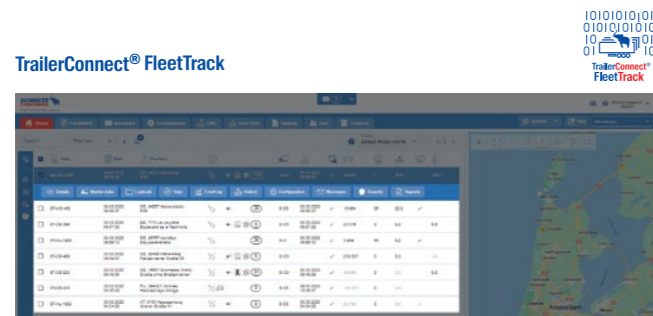
Data integration of the different process participants in one place.

- Infrastructure and consolidation platform for all telematics data
- Individual and secure configuration of the data streams
- Visualisation of the entire transport network - incl. subcontractors



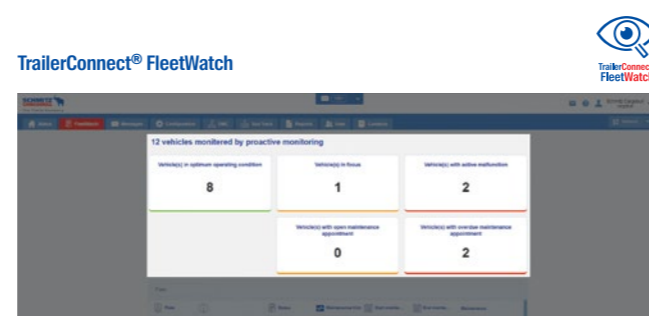
Track vehicles and share vehicle data on a job-by-job basis.

- Targeted and selected data transfer for each route (e.g. to any Real Time Visibility platforms)
- Route-based real-time monitoring, including estimated time of arrival (ETA)
- Automatic generation of order-related temperature reports



Real time fleet visualisation.

- Display of the trailer's position and availability in real time - independent of the telematics hardware used.
- Comprehensive notification and alarm configuration
- Personal reporting and history of all events, positions and temperatures



Real time monitoring of the cooling unit.

- Fleet dashboard for easy real time monitoring of cooling units
- Automatic fault analysis and recommended remedial action
- Service partner referral



Transport it the Schmitz Cargobull Way

Reliable. Safe. Smart.

THE TRANSPORT ORDER:
A carrier delivers pharmaceutical products to the Netherlands and France with the S.KO COOL reefer with S.CU 2.0 cooling unit (TAPA ready).



Friday, carrier Gschwind
Dispatcher Frank plans the routes for Monday in the **TrailerConnect® telematics portal**. Vaccine and nasal spray are to be transported for the pharmaceutical company Gut&Gesund. Frank links the transport to his client's **Real Time Visibility platform**. He uses the **TrailerConnect® Data Management Center (DMC)** for this. He makes the settings in the **TrailerConnect® portal**:

- **Two CargoSets** for the cooling unit in MonoTemp transport: Set 1 with -6° (vaccine) and Set 2 with +15° (nasal spray).
- **RemoteStart** for automatic pre-cooling of the cooling unit on Monday*.
- **Door locking system** and **TAPA*** mode** (opening of the rear doors only via PIN code)
- **Geofence zones**** for the loading and unloading locations with notification on entry via e-mail, SMS or in the portal or in the **beUptoDate app**



The tour starts on Monday



Subject to change without notice. Illustrations partly with special equipment.

S.KO-COOL-FVY-DEGB-10637-1623

* Alternatively, the driver can activate RemoteStart via his beSmart app.
** Automatic start of data transmission via TrailerConnect® Data Management Center when entering the loading zone and automatic stop when leaving the last unloading zone.
*** TAPA = Transported Asset Protection Association



More info on the S.KO COOL



More info on TAPA safety equipment



Dispatcher Frank tracks the tour in **TrailerConnect® TourTrack**:

- Position and temperature
- Live tracking of tours incl. **estimated time of arrival (ETA)**
- **Geofence** set-up and notification* of unforeseen route deviation directly via email or in the beUptoDate app.
- **Automatic route start**: Data is forwarded to the customer's **Real Time Visibility platform (RTV)** (with configured filter settings for secure data exchange).

* Safety-relevant information can also be automatically forwarded to external TAPA control centres.

Mr Schneller, a logistician at *Gut&Gesund*, can follow the order live.



Paris motorway ring road
Slow-moving traffic: It takes longer than planned to get to the unloading location:
- The route is shown as delayed in the **TrailerConnect® telematics portal**.
- Frank calls the recipient in Paris and informs him of the delay.

Unloading station in Paris
- The logistics manager in Paris asks the dispatcher Frank for the **PIN** to open* the doors. In TAPA** mode, the doors are not automatically unlocked at the destination in the **geofence** zone so that no one has uncontrolled access to the freight. Mr Schneller from *Gut&Gesund* can see in the **RTV platform** that the order has been successfully completed.

* In the case of EU cross-border traffic, the rear doors may have to be opened for customs. The PIN is entered on the keypad on the trailer or alternatively in the beSmart app.

- When leaving the **geofence zone**, the **TrailerConnect® Data Management Center** terminates the secure data transmission to the customer's **RTV platform**.



** TAPA = Transported Asset Protection Association



Monday, Carrier Gschwind
Driver Heinz checks his S.KO COOL refrigerated semi-trailer:
- The load compartment is already pre-cooled thanks to **RemoteStart**
- He activates the **CargoSet™ Vaccine™**.
- Departure to the pharmaceutical company *Gut&Gesund*.



Gut&Gesund Dusseldorf
The vaccine is loaded into the S.KO COOL.

Tuesday, company Gschwind
Frank receives a message from the refrigeration unit in the **TrailerConnect® telematics portal**: The automatic monitoring (**predictive maintenance**) recommends a check at the next possible service partner. Frank informs Heinz to have the refrigeration unit checked by the service partner in Paris.



Rest stop 150 km before Paris
Heinz finishes his working day and begins his rest period.

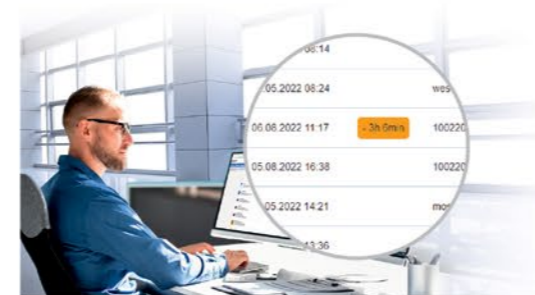


Heinz reaches the predefined **geofence**. Dispatcher Frank receives a message in the **TrailerConnect® telematics portal** or in the **beUptoDate app** and the doors are unlocked.

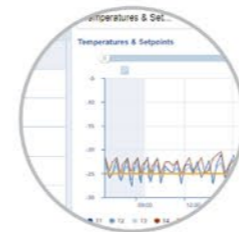
Service Partner in Paris
Heinz still has to have the cooling unit checked (message from the **Predictive Maintenance Service**). He calls **Euroservice** directly for the address to the nearest **Service Partner™** in Paris. There, the problem with the cooling unit is solved within two hours.

* Thanks to the full service contract for the S.KO COOL semitrailer box with cooling unit, all wear part repairs or maintenance are covered and the driver can benefit from the Europe-wide breakdown service including the service partner network.

Motorway to The Hague
Traffic jam due to roadworks
Frank sees via **TrailerConnect® TourTrack**: Estimated time of arrival (ETA) is getting worse.



Unloading station in The Hague
Heinz logs in at the ramp. The **digital temperature report** is generated by Heinz in the **beSmart app** and sent to Mr Schneller from *Gut&Gesund*.



At the assigned unloading station, Heinz gets the **PIN** to unlock the rear doors. After unloading the vaccine, the nasal spray is loaded. Heinz activates the **CargoSet™ Vaccine™** "Nasal Spray".

